

Verx



OpenRoads Designer
CONNECT Edition

(2022 Release 3)
10.12.02.4

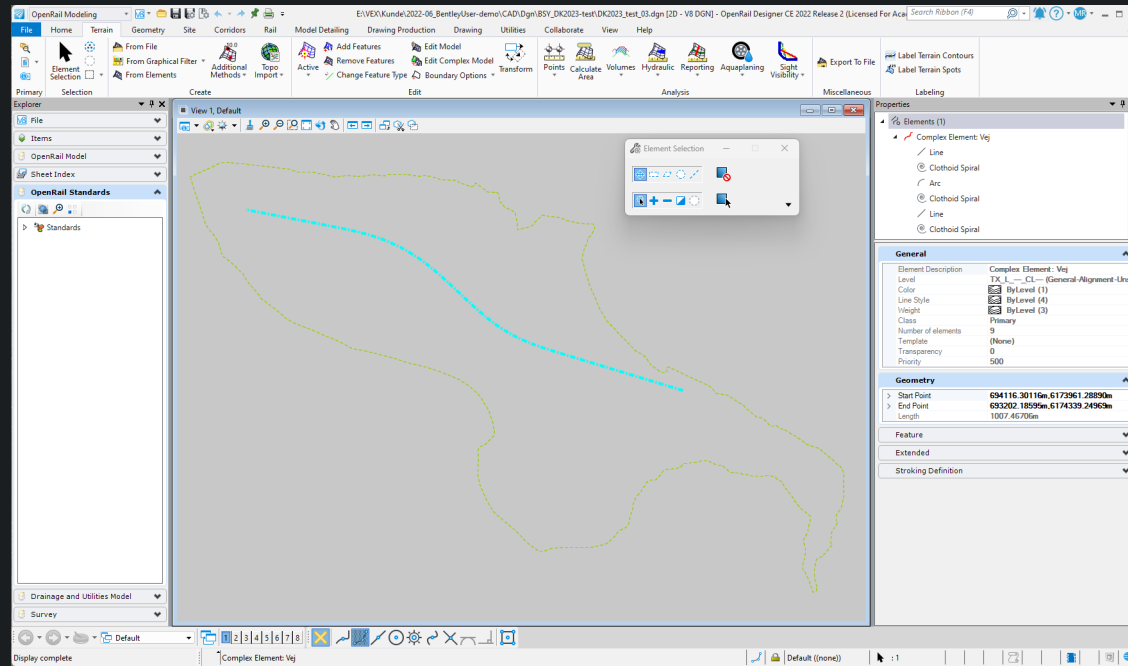
BentleyUser.dk
SIG-dag – maj 2023

OpenRoads Designer Det danske datasæt samt Tips & Tricks

Marianne Rask & Signe Hedegaard

Hvad vil vi snakke om?

- Nyt om Det danske datasæt
- ORD Tips & Tricks



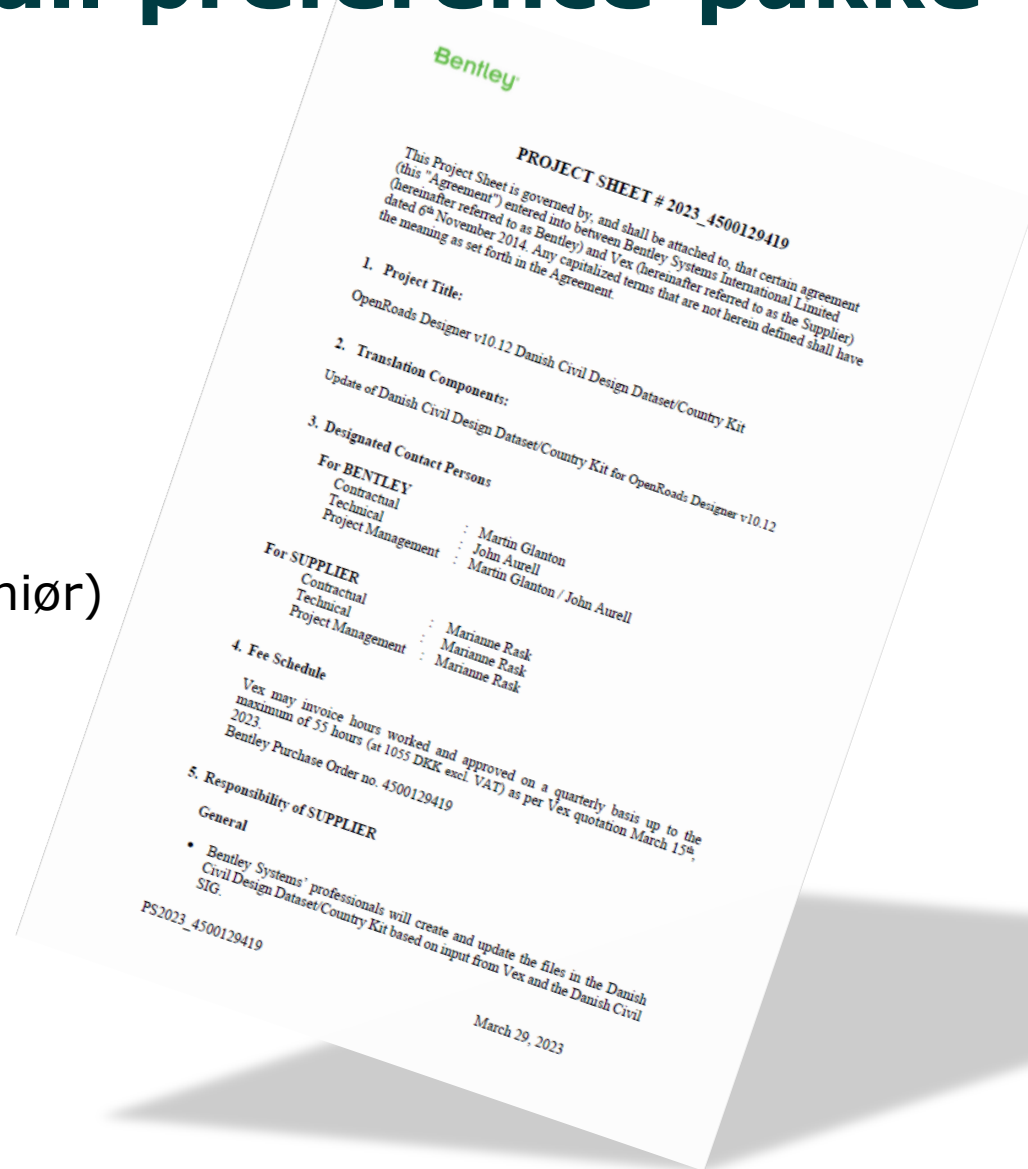
Det danske datasæt

AKA DK Dataset, DK Country Kit eller Præferencepakken

Dansk OpenRoads/Rail preference-pakke



- Seneste pakke er fra februar 2022
- kan bruges i Update 10 og nyere.
- Men nu kommer der endelig en ny!
- Vex har indgået aftale med Bentley om konsulentbistand
- John Aurell, Bentley (svensk bane-ingeniør) og Rob Nice, Bentley udfører arbejdet
- Marianne Rask står for kommunikation med jer som leverandører og for kvalitetssikring
- Fremover kan Bentley via Marianne samle op på ønsker til pakken



Localisation Priority list



Dataset	Thematic Group	Task	Priority Between 1-6 1 = high 6= low	Effort estimate in hours JA	Can this be done without local language skills?	Status	Note / Comment
Civil	DGN Library - Text Styles	Text Styles, Dimension Styles - Comparing to current dataset, incorporating	1	5	Yes	Complete	Add Arial Text Styles, Update Dimension Styles from Library and change to Arial Text Styles
Civil	DGN Library - Text Favourites	Text Favorites - Comparing to current dataset, incorporating	1	5	Yes	Complete	Add Text Favourites from Library, edit Font/Text Styles on existing Text Favourites to Arial
Civil	DGN Library - Annotations	Annotation - Changing fonts to Arial	2	10	Yes	Complete	Changed Annotation Group fonts used to an approved one (Arial)
Civil	DGN Library - Annotations	Civil Labeler - Incorporating from Metric	2	15	Yes	Complete	Incorporate Civil Labeler from the metric dataset
Civil	DGN Library - Item Types	Item Types - Incorporating from Metric	3	10	Yes	Complete	Incorporate item types from the metric dataset
Civil	General	Materials, cells, line styles etc. - Exploring, comparing to current dataset, incorporating	3	10	Yes	Complete	Some additional materials and cells have been added
Civil	General	Viewset - Checking updated MVBA	3	2	Yes	Complete	Incorporated new and updated MVBA
Rail	DGN Library - Feature Definitions	Features	1	15	Yes	Not Started	Banedanmark might be able to share work
Rail	DGN Library - Annotations	Annotation	1	15	Yes	Not Started	Banedanmark and Ramboll might be able to share work
Rail	General	Cells	1	10	Yes	Not Started	Banedanmark might be able to share work

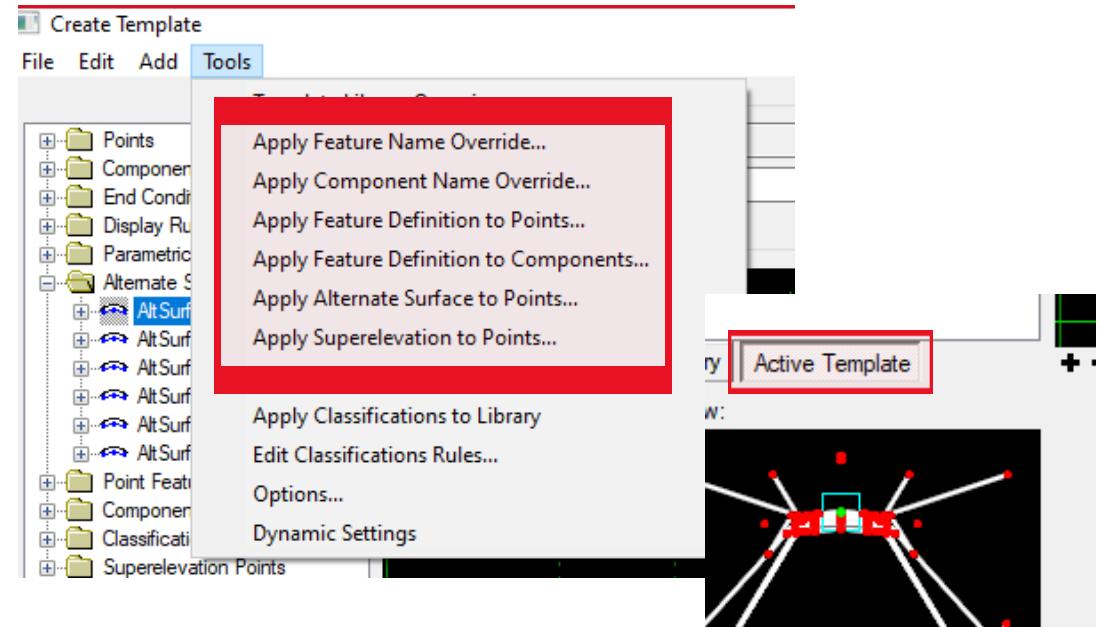
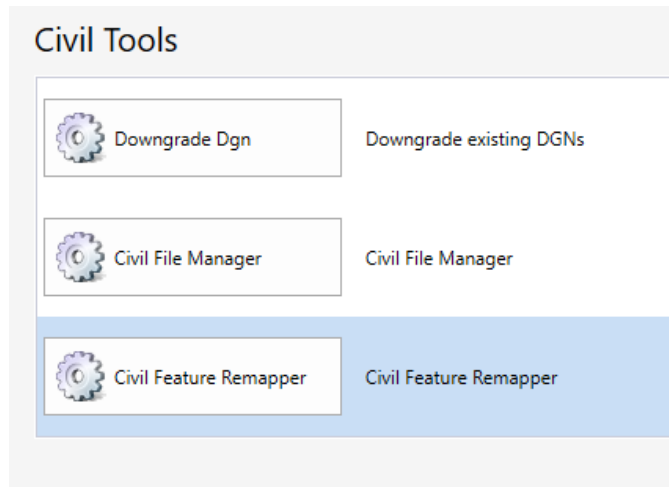
Tips og Tricks

OpenRoads & OpenRail Designer

Remapper - .itl

- .itl fra gl. version ss2/ss4/ss10 til ORD
- Projekt til projekt – én standard til en anden
- Oprydning – rette op på fejl på én gang
- Beslutning om ændring af eks. slidlagstype

Remapper-funktionen findes backstage:



Remapper - .itl

Fil 1 Configuration File – styrer strukturen

The image shows two screenshots of the Feature Remapper software interface. The left screenshot shows the 'Feature Remapper' dialog with the 'Select Configuration File' field containing a path and a red callout box 'Load eksisterende Konfig. fil' pointing to it. Below it is a red callout box 'Opret ny' pointing to the 'Create a New Configuration' link. The right screenshot shows the 'Feature Remapper Configuration' dialog with the 'New Configuration Name' field containing 'SIG-DAG itl REMAP konfig', the 'Data to Remap' radio button for 'ITL/IRD File' selected, and a table of categories to remap. A red callout box 'Opret ny' points to the 'Create a New Remapping Definition File' link. A red callout box 'Vælg fra dropdown = workspace eller kopiér' points to the 'Template (Point Feature)' dropdown in the table.

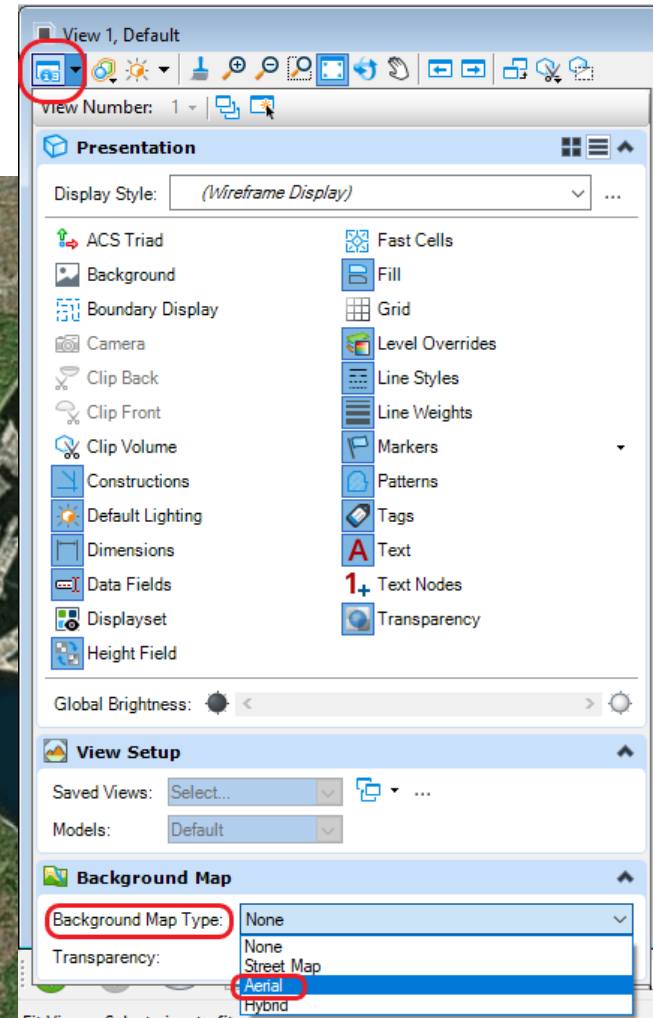
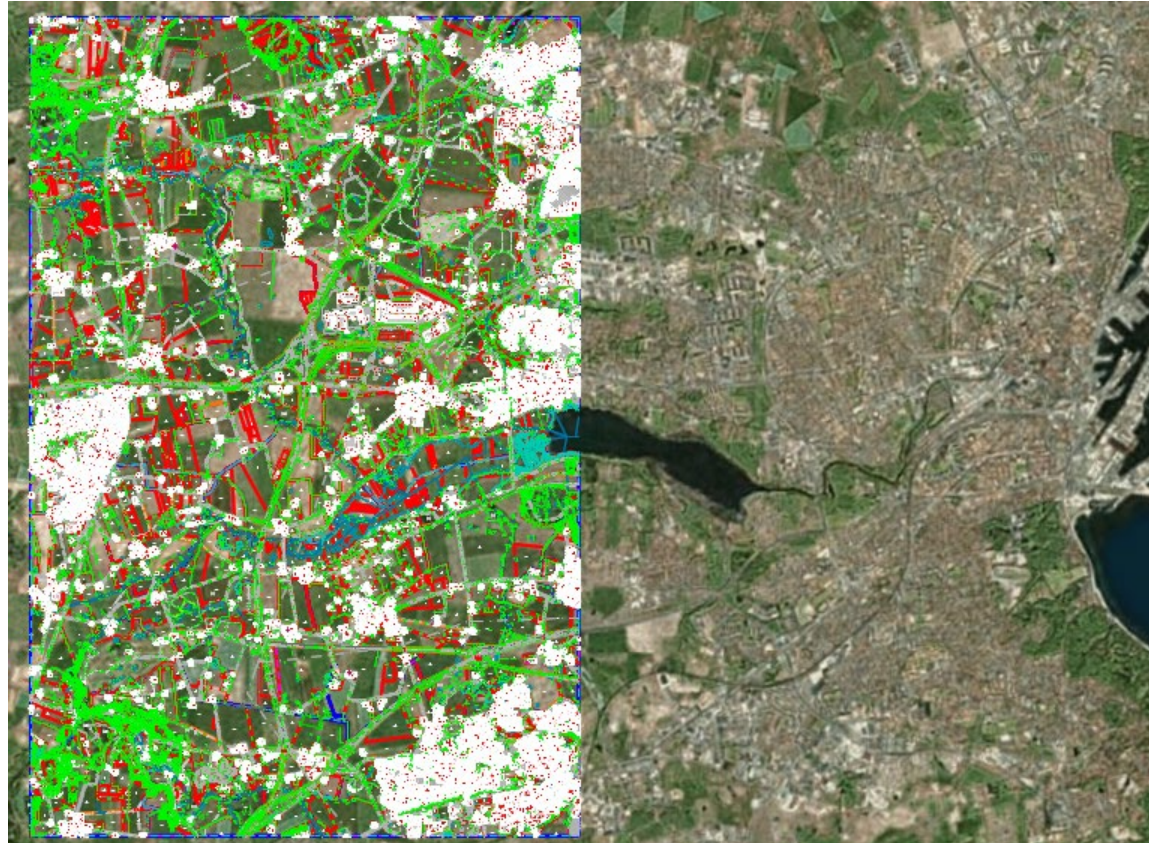
Category	Worksheet Name
<input checked="" type="checkbox"/> Template (Point Feature)	
<input checked="" type="checkbox"/> Template (Point Name)	
<input checked="" type="checkbox"/> Template (Component Feature)	
<input checked="" type="checkbox"/> Template (Component Name)	

Fil 2 Remapping Definition File – Excel-ark

The image shows three screenshots related to creating a remapping definition file. The left screenshot shows the 'Feature Remapper Configuration' dialog with the 'Select Remapping Definition File' field containing a path and a red callout box 'Load eksist. Def. fil' pointing to it. Below it is a red callout box 'Opret ny' pointing to the 'Create a New Remapping Definition File' link. The middle screenshot shows the 'New Remapping Definition File' dialog with the 'Name' field containing 'SIG-DAG_REMAPPED itl' and the 'Extract Data From' radio button for 'ITL File' selected. A red callout box 'Opret ny' points to the 'Create' button. The right screenshot shows an Excel spreadsheet with a list of feature names in column A. A red callout box 'Vælg fra dropdown = workspace eller kopiér' points to a dropdown menu in the spreadsheet showing 'Template (Point Feature)' and 'Template (Point Name)'.

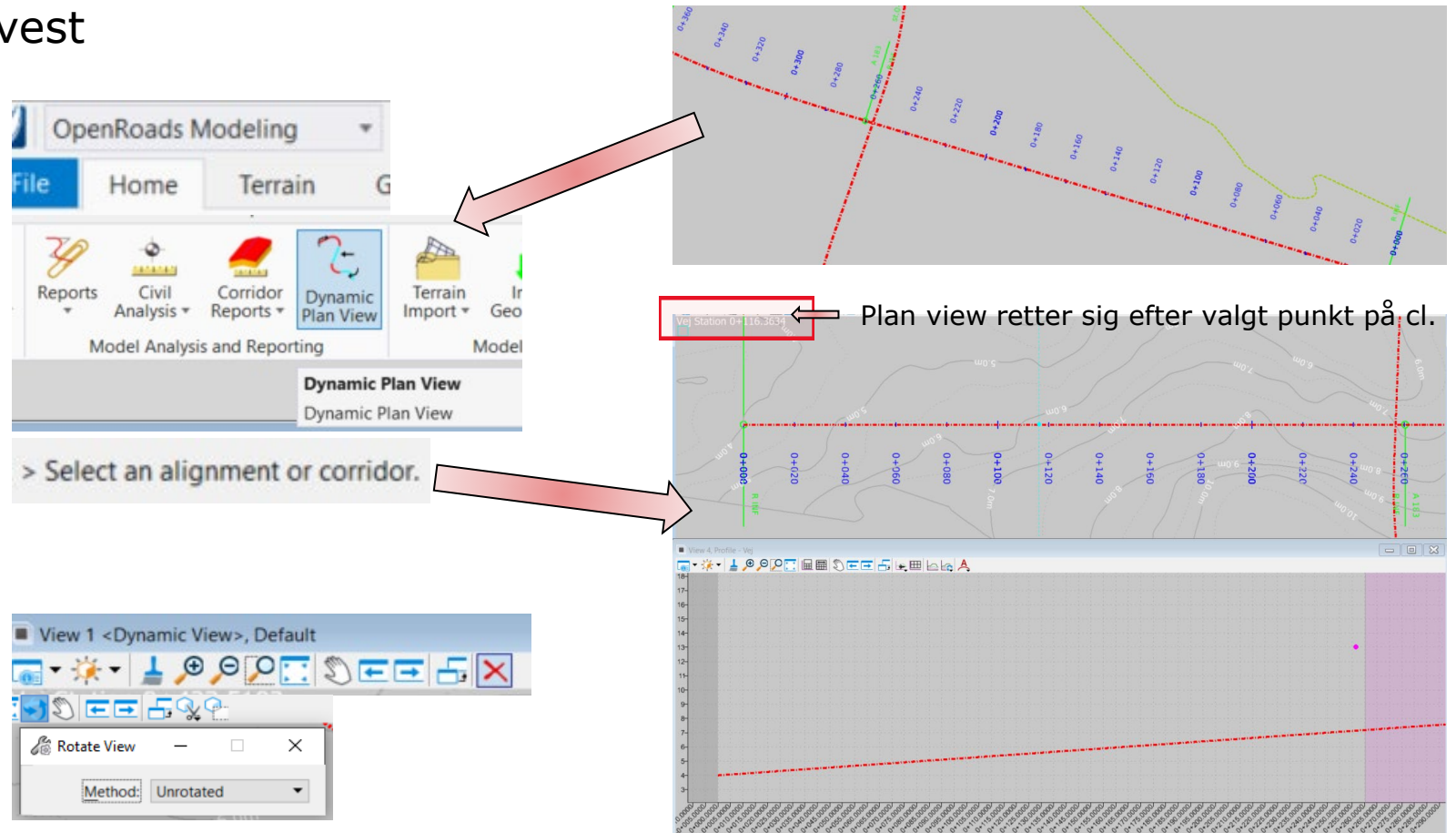
Baggrundskort

- Hvis DGN-filen er stemplet med koordinatsystem, kan man tænde for Bing baggrundskort i View Attributes



Roteret planvindue

- Planvindue roteres efter centerlinje - Nyttig visning sammen med LP
- Eksempel stationering øst-vest



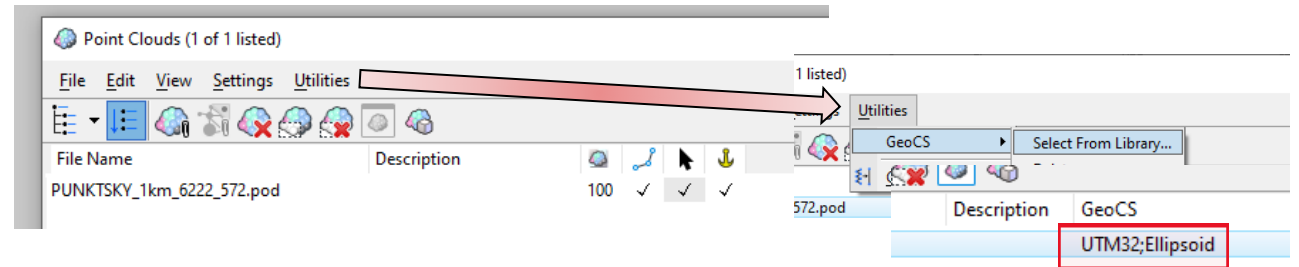
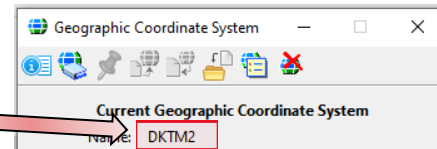
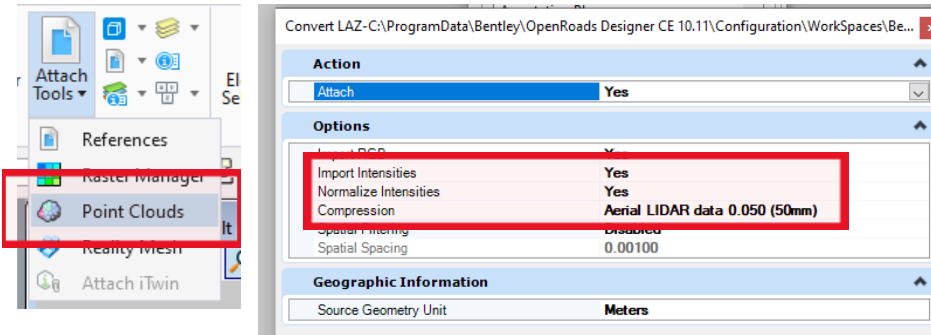
Tilbage til almindelig view:

Begræns data fra punktsky



Fra .laz/.las til .pod

- Import .laz/.las til .pod (3d seed file)



View Attributes:



Ca. 30 sek
om at danne .pod
direkte ud fra .laz

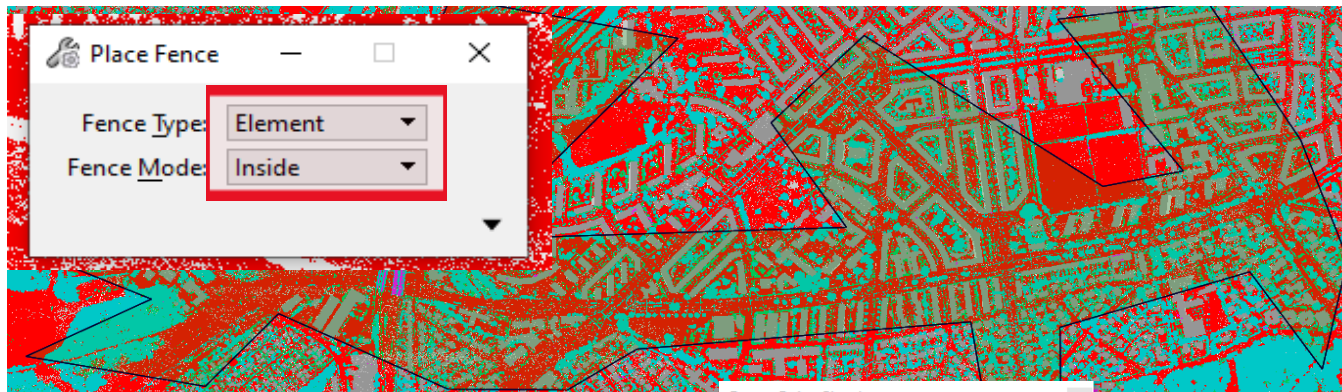
<input type="checkbox"/>	PUNKTSKY_1km_6222_572.laz	LAZ-fil	351 550 KB
<input type="checkbox"/>	PUNKTSKY_1km_6222_572.pod	POD-fil	246 142 KB

Begræns data fra punktsky

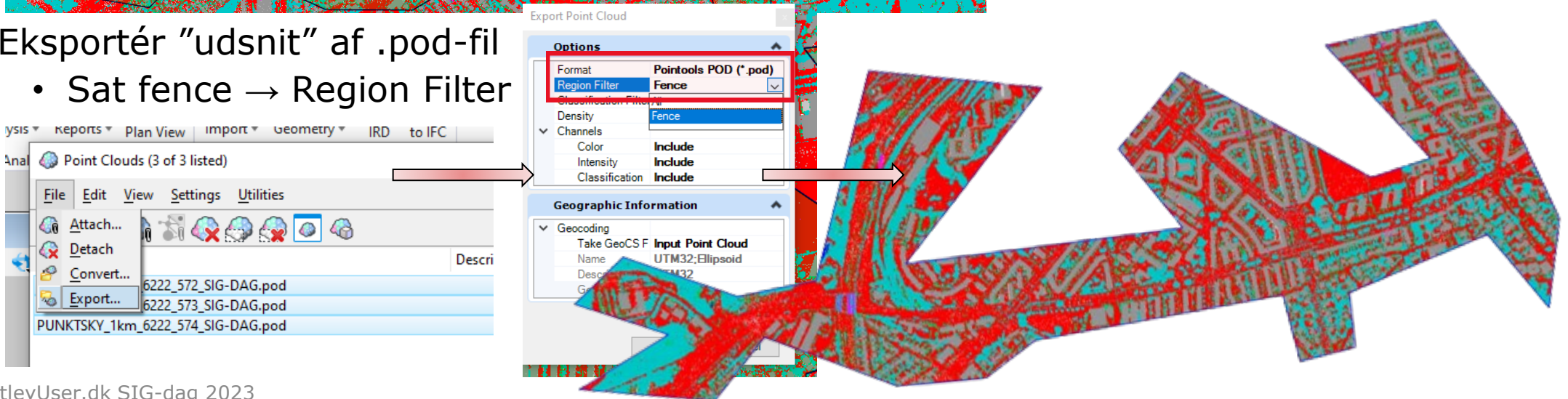


Eksport - delmængde af .pod-fil/-filer

- Tegn klip-boundary (2d referencefil) + Fence by Element



- Eksportér "udsnit" af .pod-fil
 - Sat fence → Region Filter

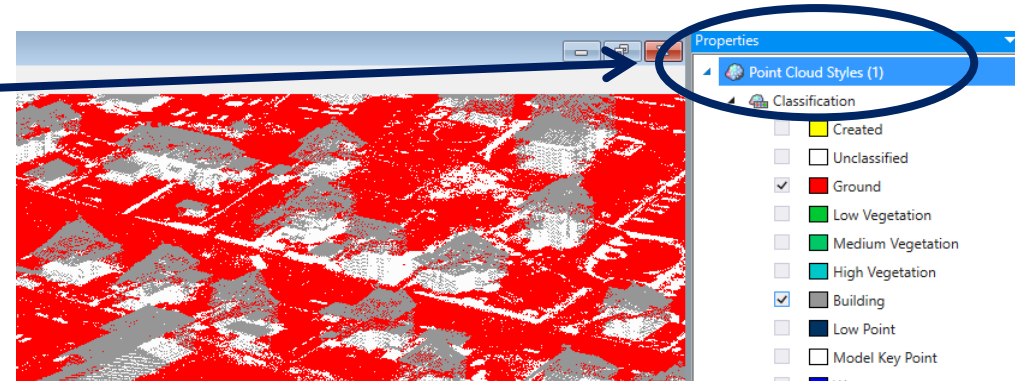
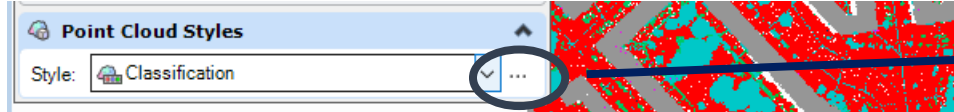


Begræns data fra punktsky

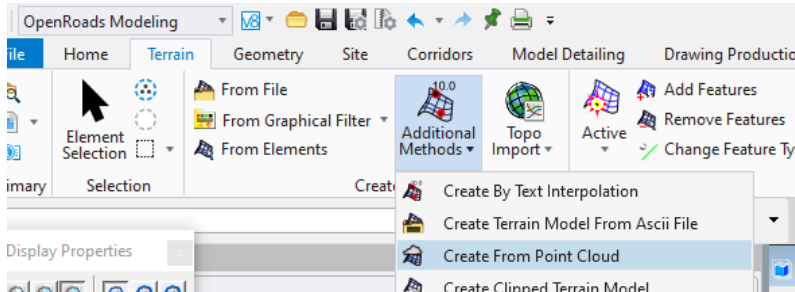


Klipet .pod-fil til ORD terrænmodel

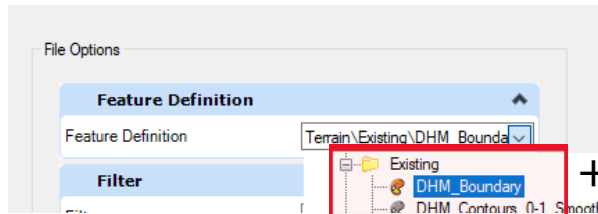
- Tilknyt klippet .pod-fil
- Sortér data via klassificering (Ground)



- Terræn fra punktsky



TIPS! til processen:



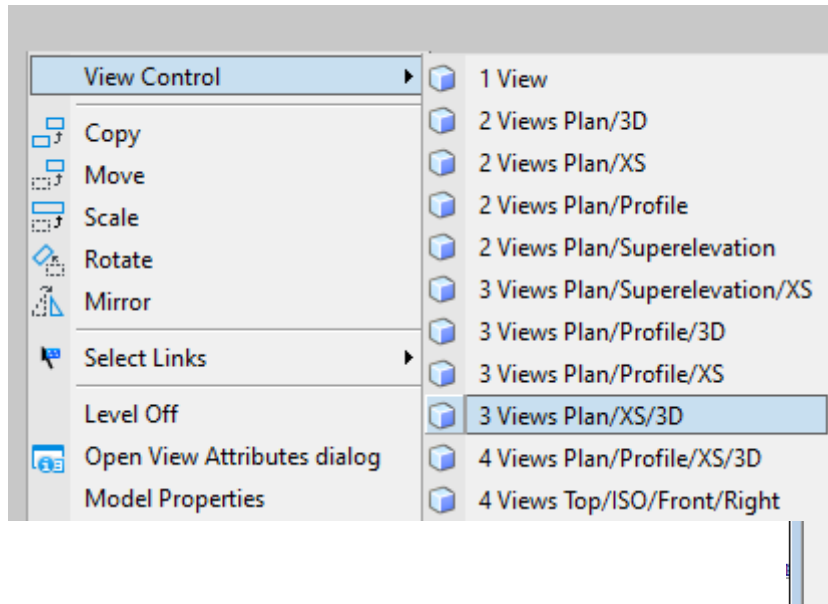
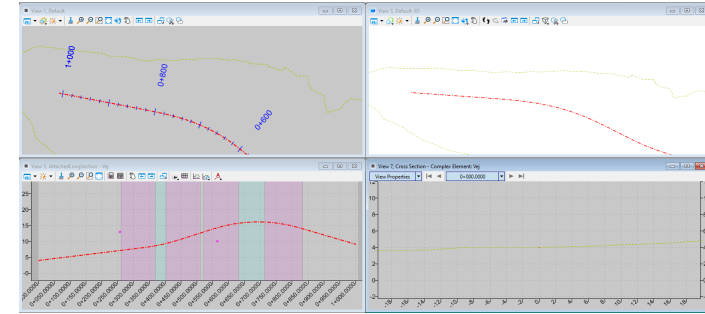
+ klip til klip-boundary



Ca. 20 sek
om at danne
ORD terræn

View controls via højre-klik

- Højreklik-menu for View Control styres af en macro:
 - Find 3D modellen for den aktive model og referér i View 3
 - Åben View 1 = Plan, 3 = 3D Model, 5 = Profile, 7 = XS
 - Ændr Display Style for View 3 til "Illustration:Ignore Lighting"
 - Sæt View 3 til det samme udsnit som View 1
 - Find gennemsnitskoten og centrér View 3 om det



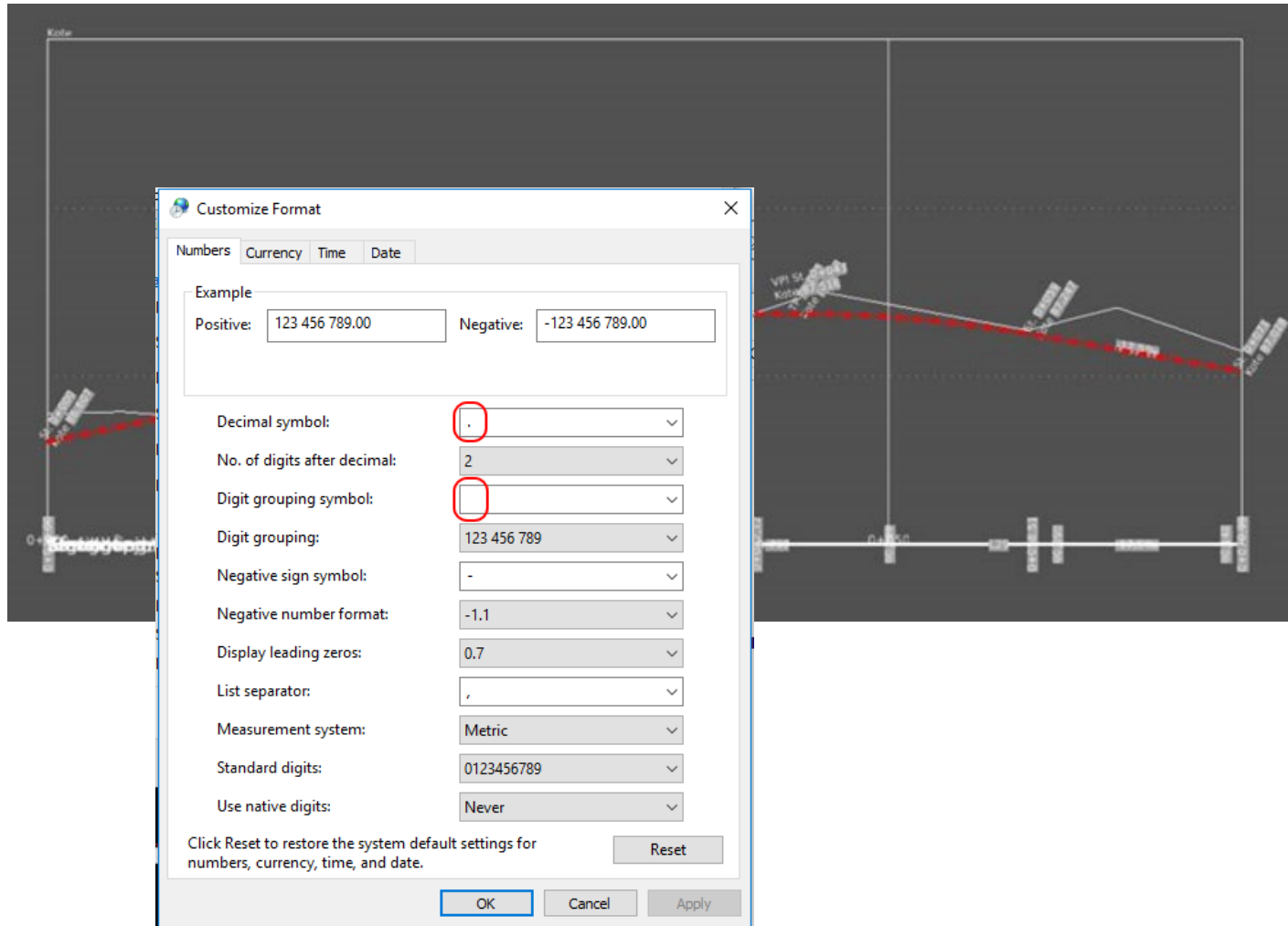
```
\\E:\IT\CAD_Data\ORD\Configuration\Organization-Civil\Denmark Standards 2023\Macros\ViewSet.mvba - Module1 (Code)
general) (Declarations)

' Open Views 1,3,5 and 7. 1 = Plan, 3 = 3D Model, 5 = Profile, 7 = XS
CadInputQueue.SendKeyin "vba run ViewControl FourSquare"
CadInputQueue.SendKeyin "view set model ""Default"" 1"
CadInputQueue.SendKeyin "MDL KEYIN BENTLEY.VIEWATTRIBUTESDIALOG,VAD VIEWATTRIBUTESDIALOG SETATTRIBUTE 4 Grid True"
CadInputQueue.SendKeyin "MDL KEYIN BENTLEY.VIEWATTRIBUTESDIALOG,VAD VIEWATTRIBUTESDIALOG SETATTRIBUTE 6 Grid True"

CadInputQueue.SendKeyin "CHANGE VIEW CUSTOM ""Illustration:Ignore Lighting"" 3"
CadInputQueue.SendKeyin "MDL KEYIN BENTLEY.VIEWATTRIBUTESDIALOG,VAD VIEWATTRIBUTESDIALOG SETATTRIBUTE 3 ClipVolume False "

' Set view 3 to the same range as view 1
ActiveDesignFile.Views(1).Select
Dim vwOne As view
Set vwOne = ActiveDesignFile.Views(1)
Dim vwTwo As view
Set vwTwo = ActiveDesignFile.Views(3)
vwTwo.Rotation = Matrix3dIdentity
On Error Resume Next
vwTwo.Fit True
On Error GoTo 0
```

"Sammenklappede" tekster eller Template? MR



- ...så ret din decimalseparator til punktum
- Windows > Settings > Time & Language > Region > Additional date, time & regional settings > Region > Change date, time, or number formats > Additional settings...

Spørgsmål?

Vex

Marianne Rask
MR@vex-consult.dk
+45 2036 2014



Signe Hedegaard
svh1@vd.dk
+45 7244 2805

Bentleyuser.dk